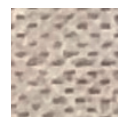
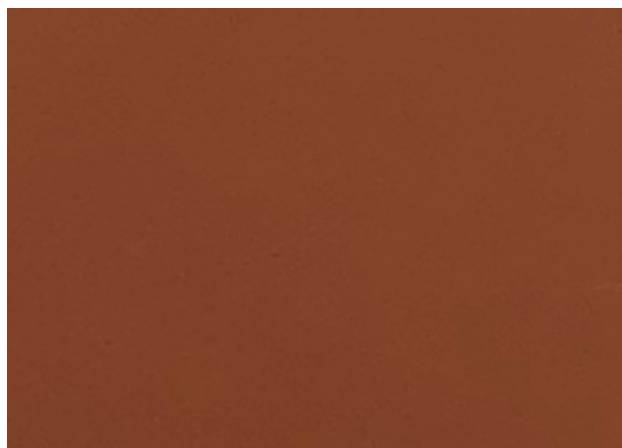


# Imperfirm

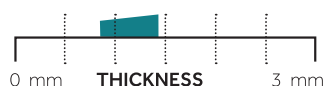


○ RECYCLING  
○ POLYMER



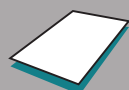
back

## Properties



### ADHESIVE

One side / Polyester



### DELIVERY

1.00 x 1.50 m / 0.75 x 1.00 m



### CUTTING

Diagonally

**Extruded, thermoplastic and elastic reinforcement material on a polyester non-woven.**

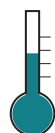
- Excellent shape reproduction and shape retention
- Reliable bonding to a wide variety of materials
- Due to heat the adhesive will be activated and the material will be softened
- Material stays in shape after cooling process

*Usage: for shoes, insoles or as a reinforcement material*

## Material Data

Types	Thickness	Size	
Imperfirm Brown	0.8 mm	1.00 x 1.50 m	0.75 x 1.00 m
Imperfirm Brown	1.0 mm	1.00 x 1.50 m	0.75 x 1.00 m
Imperfirm Brown	1.1 mm	1.00 x 1.50 m	0.75 x 1.00 m
Imperfirm Brown	1.4 mm	1.00 x 1.50 m	0.75 x 1.00 m
Imperfirm Black	0.8 mm	1.00 x 1.50 m	0.75 x 1.00 m
Imperfirm Black	1.0 mm	1.00 x 1.50 m	0.75 x 1.00 m
Imperfirm Black 2/S	1.1 mm	1.00 x 1.50 m	0.75 x 1.00 m
Imperfirm White 2/S	1.1 mm	1.00 x 1.50 m	0.75 x 1.00 m

## Processing

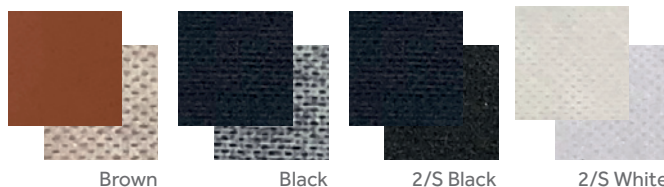


Softening range  
100°C-110°C

Bonding temperature  
120°C-150°C

Temperatures can be reached with a usual hot air gun/oven or heating plates. The material gets soft and stays formable for a few seconds.

## Colors



**For medical device Class 1**  
According (EU) MDR 2017/745



## Reinforcements

Manufacturer's warranty & storing: When working with multiple materials during processing, chemical reactions and incompatibilities between components should always be tested beforehand. We are not liable for damage caused by failure to follow our instructions or responses beyond our influence and control. Under normal conditions, storage is unlimited, but avoid storage in direct sun. The goods are guaranteed for 6 months from the date of delivery.

[www.frecoma.nl](http://www.frecoma.nl)