

# Thermoflex



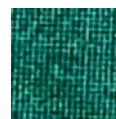
30-60%



RECYCLING

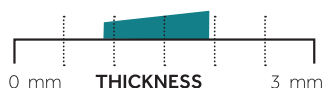


POLYMER



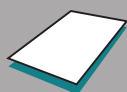
back

## Properties



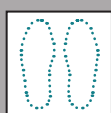
### ADHESIVE

Both sides / Polyester  
in compound



### DELIVERY

1.00 x 1.50 m / 0.75 x 1.00 m



### CUTTING

Length direction

**Extruded, thermoplastic and firm material which provides fast and easy processing.**

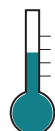
- Highly reliable bonding to a wide variety of materials
- Adhesive is in the compound
- The edges turn fluid during processing and therefore end up smooth
- Due to heat the adhesive will be activated and the material will be softened
- Material stays in shape after cooling process
- It can be heated up and preformed again many times.

*Usage: for shoes, insoles or reinforcement purpose*

### Material Data

Types	Thickness	Size	
Thermoflex Black	0.9 mm	1.00 x 1.50 m	0.75 x 1.00 m
Thermoflex Green	1.0 mm	1.00 x 1.50 m	0.75 x 1.00 m
Thermoflex Magenta	1.2 mm	1.00 x 1.50 m	0.75 x 1.00 m
Thermoflex Black	1.3 mm	1.00 x 1.50 m	0.75 x 1.00 m
Thermoflex Red	1.3 mm	1.00 x 1.50 m	0.75 x 1.00 m
Thermoflex Onyx	0.9 mm	1.00 x 1.50 m	0.75 x 1.00 m
Thermoflex Onyx	1.3 mm	1.00 x 1.50 m	0.75 x 1.00 m
Thermoflex Sand	1.8 mm	1.00 x 1.50 m	0.75 x 1.00 m

### Processing



Softening range  
120°C-150°C

Bonding temperature  
90°C-100°C

Temperatures can be reached with  
a usual hot air gun/oven or heating plates.  
The material gets soft and stays  
formable for a few seconds.

### Colors



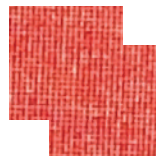
Black



Green



Magenta



Red



Onyx



Sand

**For medical device Class 1**  
According (EU) MDR 2017/745



### Reinforcements

Manufacturer's warranty & storing: When working with multiple materials during processing, chemical reactions and incompatibilities between components should always be tested beforehand. We are not liable for damage caused by failure to follow our instructions or responses beyond our influence and control. Under normal conditions, storage is unlimited, but avoid storage in direct sun. The goods are guaranteed for 6 months from the date of delivery.

[www.frecoma.nl](http://www.frecoma.nl)