



60-  
100%



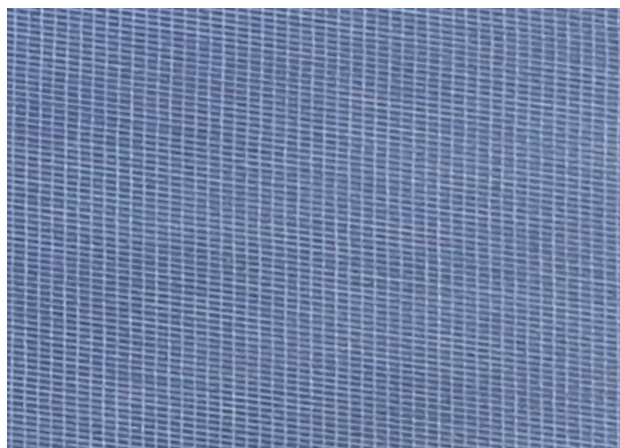
RECYCLING



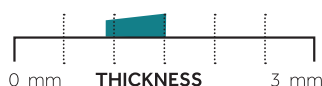
POLYMER

PRODUCTSHEET

# Reflex

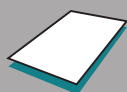


## Properties



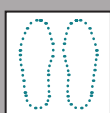
### ADHESIVE

Both sides / Polyester  
in compound



### DELIVERY

1.00 x 1.50 m / 0.75 x 1.00 m



### CUTTING

Length direction

**Thermoplastic and firm material which provides fast and easy processing.**

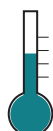
- Both sides are covered with a tear proof polyester fabric for a product that will perform the standards of outstanding quality
- The edges turn fluid during processing and therefore end up smooth
- Due to heat the adhesive will be activated and the material will be softened
- Material stays in shape after cooling process

*Usage: for insoles or reinforcement purposes*

## Material Data

Types	Thickness	Size	
Reflex Blue	0.9 mm	1.00 x 1.50 m	0.75 x 1.00 m
Reflex Blue	1.3 mm	1.00 x 1.50 m	0.75 x 1.00 m
Reflex Blue	1.5 mm	1.00 x 1.50 m	0.75 x 1.00 m
Reflex Orange	0.9 mm	1.00 x 1.50 m	0.75 x 1.00 m
Reflex Orange	1.3 mm	1.00 x 1.50 m	0.75 x 1.00 m
Reflex Orange	1.5 mm	1.00 x 1.50 m	0.75 x 1.00 m

## Processing

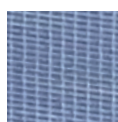


Softening range  
120°C-150°C

Bonding temperature  
90°C-100°C

Temperatures can be reached with  
a usual hot air gun/oven or heating plates.  
The material gets soft and stays  
formable for a few seconds.

## Colors



Blue



Orange

**For medical device Class 1**  
According (EU) MDR 2017/745



## Reinforcements

Manufacturer's warranty & storing: When working with multiple materials during processing, chemical reactions and incompatibilities between components should always be tested beforehand. We are not liable for damage caused by failure to follow our instructions or responses beyond our influence and control. Under normal conditions, storage is unlimited, but avoid storage in direct sun. The goods are guaranteed for 6 months from the date of delivery.

[www.frecoma.nl](http://www.frecoma.nl)